


# PRODUCT SHEET

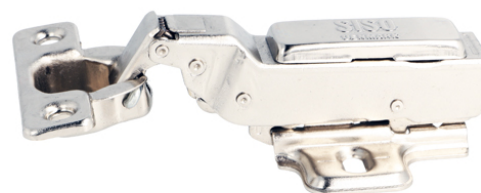
## Description:





Soft Closing Hinge "C",  $\varnothing 26$ mm, Clip-On, H=2, Plate F/Wood Screws Inset, 100 DG, Cup cc:38m, Mounting Plate F/Wood, Screws, H:2mm, W/SISO Name Plate, Hydraulic Plastic Pump

## Item number:

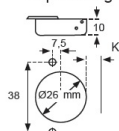
15.02.660-0

Units	Box	Carton	HS Code	Barcode
Pcs.	1	100	8302100090	
				5704866052634



Steel - Nickel Plated	Item No.	D: Overlay calculations	A: Gap calculations																				
 Full overlay (A) $H = H + 10,5 + K - D$ Incl. SISO name plate + mounting plate $H = 0$	15.02.660	<table border="1"> <tr><td>D</td><td>K</td><td>3</td><td>4</td><td>5</td></tr> <tr><td>0</td><td>13,5</td><td>14,5</td><td>15,5</td><td></td></tr> <tr><td>2</td><td>11,5</td><td>12,5</td><td>13,5</td><td></td></tr> <tr><td>4</td><td>9,5</td><td>10,5</td><td>11,5</td><td></td></tr> </table>	D	K	3	4	5	0	13,5	14,5	15,5		2	11,5	12,5	13,5		4	9,5	10,5	11,5		
D	K	3	4	5																			
0	13,5	14,5	15,5																				
2	11,5	12,5	13,5																				
4	9,5	10,5	11,5																				
 Half overlay (B) $H = H + 1,5 + K - D$ Incl. SISO name plate + mounting plate $H = 0$	15.02.665	<table border="1"> <tr><td>D</td><td>K</td><td>3</td><td>4</td><td>5</td></tr> <tr><td>0</td><td>4,5</td><td>5,5</td><td>6,5</td><td></td></tr> <tr><td>2</td><td>2,5</td><td>3,5</td><td>4,5</td><td></td></tr> <tr><td>4</td><td>0,5</td><td>1,5</td><td>2,5</td><td></td></tr> </table>	D	K	3	4	5	0	4,5	5,5	6,5		2	2,5	3,5	4,5		4	0,5	1,5	2,5		
D	K	3	4	5																			
0	4,5	5,5	6,5																				
2	2,5	3,5	4,5																				
4	0,5	1,5	2,5																				
 Inset (C) $H = H - 8,5 + K + A$ Incl. SISO name plate + mounting plate $H = 2$	15.02.660	<table border="1"> <tr><td>A</td><td>K</td><td>3</td><td>4</td><td>5</td></tr> <tr><td>0</td><td>5,5</td><td>6,5</td><td>7,5</td><td></td></tr> <tr><td>2</td><td>7</td><td>8</td><td>9</td><td></td></tr> </table>	A	K	3	4	5	0	5,5	6,5	7,5		2	7	8	9							
A	K	3	4	5																			
0	5,5	6,5	7,5																				
2	7	8	9																				
 $H = 0/2$ t/chipboard screws Clip-on		Delivered as standard mounting plate with all hinges. Chipboard screws to be ordered separately.																					

### Cup drawing



Opening angle:	100°
Depth of hinge cup:	10 mm
Diameter of hinge cup:	26 mm
Mounting of hinge. Screw on:	c.c. 38 mm
Possible drilling distances on the door (K):	3-5 mm
Door thickness:	12-22 mm

## SISO A/S

Mileparken 11  
DK-2740 Skovlunde  
Denmark  
VAT: DK 24786013

Phone +45 45 830 900

www.siso.dk  
siso@siso.dk

Danske Bank  
Nytorv Branch  
Copenhagen  
SWIFT: DABADKKK

Account no.  
4180 3112 112936  
IBAN Account  
DK7230003112112936